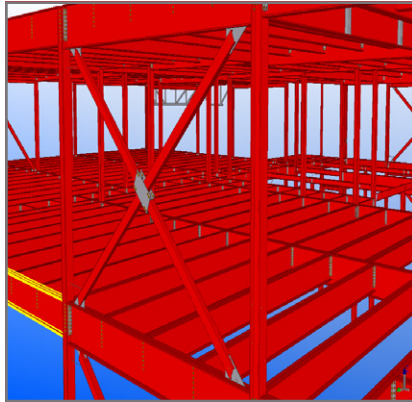


## STEEL CONNECTION DESIGN



### CONNECTION DESIGN SERVICES

Design-build engineer of record  
Metal deck engineering calculations  
Temporary bracing for steel erection  
Stair design / calculations

### QUICK STATS

Founded 1955  
Staff of over 60  
National client base  
Licensed in over 45 states  
Member, AISC  
Offices: Minneapolis | Duluth | Phoenix

### CONTACT

Jerod Hoffman, PE  
jhoffman@mbjeng.com  
612.604.3608 direct  
612.730.1851 cell  
12 South Sixth Street, Suite 810  
Minneapolis, MN 55402

### CONNECTION DESIGN YOUR WAY

MBJ partners with clients to provide reliable steel connection design for any size project, large or small, anywhere in the country. We work according to our clients' specifications and methods, delivering steel connection design that is efficient, accurate, timely, and cost-effective. With over forty structural engineers located in three offices, we implement speedy processing of designs and calculations, all rigorously evaluated for quality assurance.

### INTEGRATED DESIGN DELIVERY WITH TEKLA



We can also save you time and money through our integrated delivery system, using Tekla-trained connection engineers, who will review and approve connections within the 3D model.

*"Our firm has retained MBJ to design structural steel connections on several major projects. Their people know the building codes and latest AISC recommendations for connections, and work with our staff to provide connections that meet project requirements and provide for economical fabrication and erection. Their calculations and details are organized so detailers can accurately incorporate the connection design requirements into the shop details."*

— L.A. Kloiber, Vice President, Engineering, LeJeune Steel Co.

*Knowledgeable | Collaborative | Responsive*

### SELECTED PROJECTS

- Minnesota Twins Stadium, Minneapolis, MN  
6000 tons (Walter P. Moore, Engineer of Record)
- University of Minnesota TCF Stadium, Minneapolis, MN  
8000 tons (Magnusson Klemencic, Engineer of Record)
- Elmhurst Memorial Center for Health, 1200 South York Road, Elmhurst, IL  
7100 tons (Albert Kahn Associates, Engineer of Record)
- College of DuPage Health Sciences Building, Glen Ellyn, IL  
1400 tons (Thornton Tomasetti, Engineer of Record)
- Epic Systems Corporation, Verona, WI
- Cabela's Stores, Washington and Illinois

